

CERTIFICATE OF LOCATION OF GOVERNMENT CORNER

SOUTHEAST Corner of Section 35, Township 105N, Range 42W

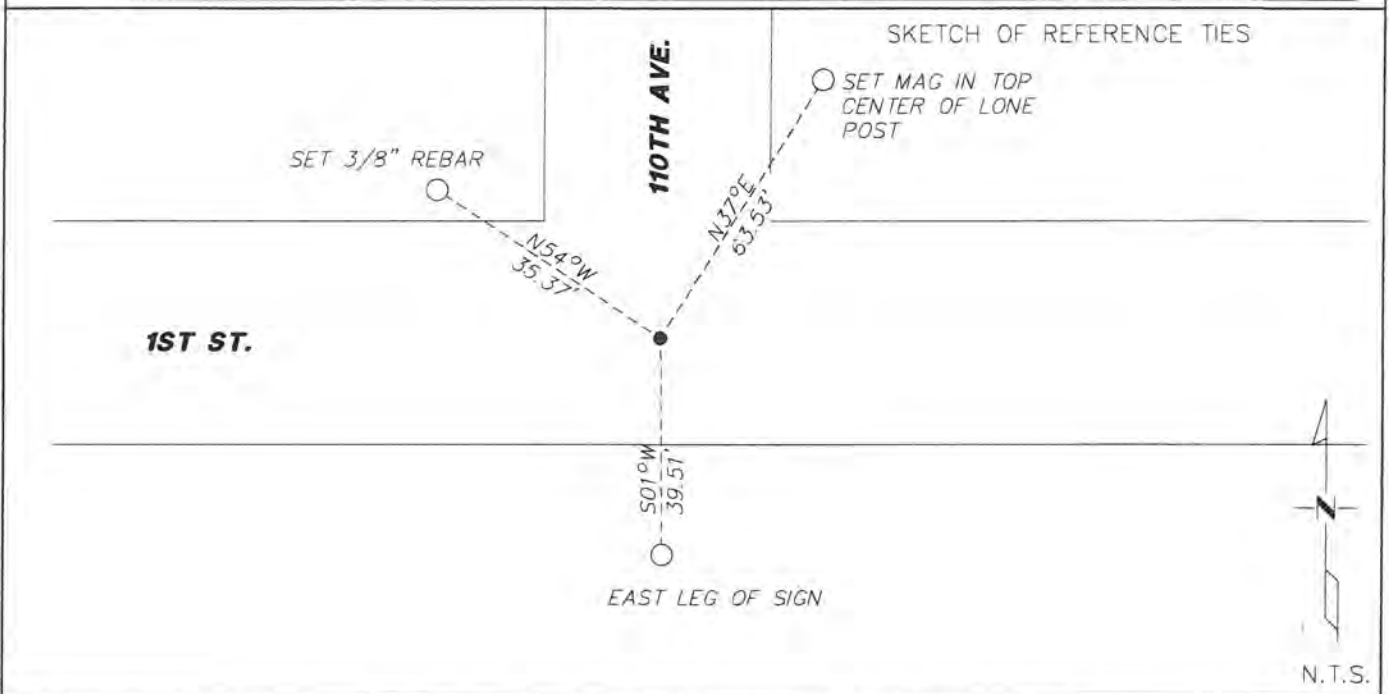
5th Principal Meridian, State of Minnesota, County of Murray.

At the corner location shown on the sketch:

On 05/16/19 found a No. 5 rebar, down 0.1'
DATE

left monument as found lowered monument removed monument (explain)

On _____ placed a _____
DATE



Statement of evidence for this corner location is on back of this page.

I hereby certify that this document was researched and prepared by me or under my direct supervision and that I am a licensed Land Surveyor under the laws of the State of Minnesota.

Signature *K. Wal.*

Date 6/27/19 License No. 49563

Title:

- Land Surveyor Professional Engineer
 County Surveyor County Engineer

OFFICE OF THE COUNTY RECORDER

County of Murray

I hereby certify that this document was filed in the Co.

Recorder's office at 9:00 A.M. on the 8th day of July A.D. 20 19

County Recorder *Evelyn Larson*

by _____, Deputy

DOCUMENT NO. —

Statement of Evidence:

Southeast corner of Section 35, Township 105 North, Range 42 West, 5th Principal Meridian, Murray County, Minnesota.

- 1901 J.W. Woolstiencraft, County Surveyor, notes show a stone in grade. Measured 2660' to the SQ corner of Sec. 35, measured 2622.5' to the EQ corner of Sec. 35.
- 2012 Murray County Highway Department, found a Land Surveyor pin with cap stamped "ULTEIG #44563", 1" down. Established coordinates.
- 2019 Westwood Professional Services searched area and found a No. 5 rebar, down 0.1'. Fits centerline to a E-W road and is 1.5' west of centerline to a road to the north. Matches coordinates provided by Murray County Highway Department. Set 3 ties. Holding No. 5 rebar as best available evidence.

Analysis of the recovered data, field evidence and survey measurements, indicates that the monument found is the correct perpetuation of this corner. For additional information concerning this corner please contact Westwood Professional Services.

